



**Beer / Liquor Stores**



**Tobacco / Wine / Small Grocery Stores**



**Convenience Stores / Salons**



**Hardware, Paint or General Retail Stores**

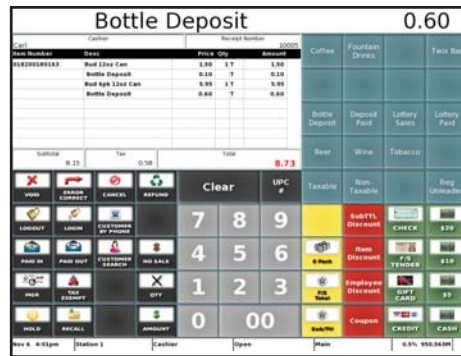
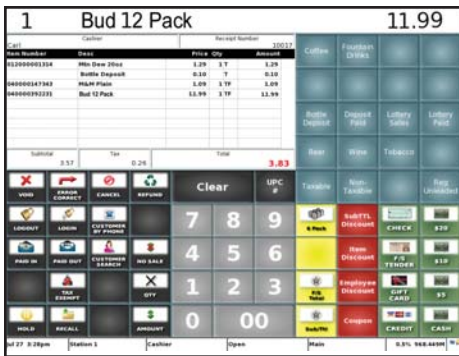
## **NCC Reflection POS Touch Screen Terminal**



### **Fanless POS Terminal with True Flat Touch Screen and Vivid LED Backlight for Reliability and Energy Savings**

NCC Reflection POS is powered by the most feature-rich software of any product in its class. This system is designed for a wide variety of retail store concepts including General Stores, Liquor Stores, Small Grocery, Discount Stores and Convenience Stores. Reflection POS has the functionality to meet the demands of most retail operations.

- Intel® Celeron™ 1037U Dual Core 1.8GHz **Fanless** Processor
- 15" LCD with 5-Wire Resistive Touch
- Bezel-Less – Debris Will Not Collect and Disrupt Touch Operation – Resists Liquid Splashes and Allows Easy Clean Up
- Self-Healing, Fully Data-Redundant Network
- Integrated Credit Card / PIN Debit / Gift Card Processing
- Up to 30,000 Products and Product Scanning



Graphic screens guide operators with minimal training. Condiments, flavors, instructions and options can be placed upon one key. When an item is registered, a specific key displays the options available for the item.

## Powerful NCC Reflection POS Software Features

- Up to 30,000 Products
- Product Scanning
- Coupon Scanning
- Link PLU/High-Cone
- Member/Non-Member Pricing
- Mix & Match
- Not Found PLU
- Item Countdown with Automatic 86
- Ounce/Pound Scale Interface
- Time of Day / Day of Week Pricing
- Drivers License Birthdate Verification
- Price Check Function
- Customer Rewards
- Customer Charge Accounts
- Integrated Credit / Debit / Gift / EBT
- Inventory Control
- Labor Scheduling and Time & Attendance
- Self-Healing, Fully Data-Redundant Network
- Online Ordering Option and Delivery
- Available Loyalty Module
- Food Stamp Sorting and Tendering
- End-of-Day Data Sent to a Corporate FTP Site
- Interface to Optional Insight BackOffice™ Software

## No Single Point of Failure

NCC Reflection POS is equipped with the most sophisticated, terminal-redundant network on the market. Using the integrated high-speed Ethernet, all system information is replicated on every terminal across the TCP/IP network. If a terminal is removed from the LAN, all information is automatically synchronized when the terminal re-enters the network.

## Inventory

An integrated inventory system accurately tracks product usage. Item count down feature can signal the manager that a particular product is no longer available, while inventory reports provide usage details and cost information.

## Built in Time Clock

Using the available time clock feature, NCC Reflection POS will help managers capture the valuable information necessary to control labor costs. Employee clock in/out procedures can either be performed by numeric entry, magnetic card or digital I-Button. Security levels assigned by job codes provide the controls necessary to access POS functions. Detailed time clock reports will provide employee punch time data with accumulated pay period totals, as well as additional reports to provide critical labor to sales information.

## Programming

With NCC Reflection POS, no back office PC is required to make changes or additions to the system tables. All item, employee, screen design, etc., changes may be performed directly on the POS terminal in an easy to use programming mode using an on screen touch keyboard. Changes are accomplished easily and are immediately available to all stations in the POS system.

## Extensive Reporting

NCC Reflection POS has a wide range of real time reports. Reports can be

obtained locally at each station or on the back room PC if equipped with the optional PC Workstation software. Report data can also be exported and communicated via FTP push or poll methods for use with other reporting solutions. Detailed information can be obtained by station, system, revenue center, user and many more.

## NCC Reflection POS Certifications



NCC Reflection POS is validated by an independent Qualified Security Assessor to meet or exceed PCI requirements for card payment processing.



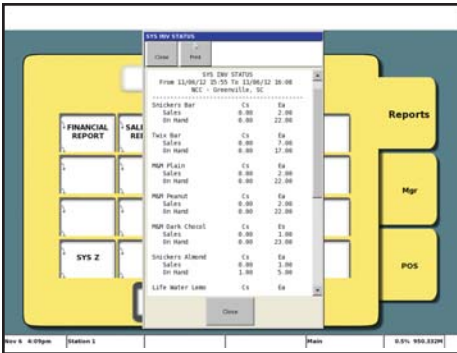
NCC Reflection POS is also validated by National Weights and measures to meet requirements for integrated electronic scales.

## SPT-4845 Features and Specifications

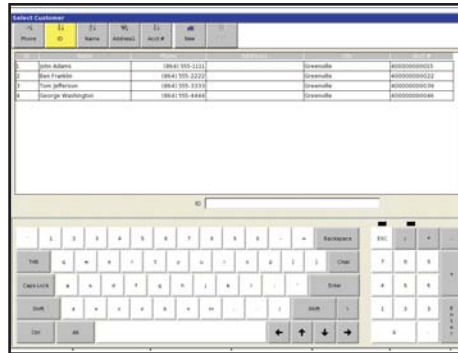
The SPT-4845 integrated touch screen terminal is the ideal host for NCC Reflection POS™ Software. The high performance terminal features the powerful Intel Celeron 1037U dual-core CPU to reliably and efficiently power demanding POS applications in general stores, liquor stores, small grocery, discount stores and convenience stores. The SPT-4845 BIOS is specifically configured for optimum performance with NCC Reflection POS Software.



# SPT-4845 NCC Reflection POS Touch Screen Terminal



An integrated inventory system accurately tracks product usage.



No back office PC is required to make changes or additions to the system tables.

Choose the platform that best suits your business...

## NCC Reflection POS Embedded

The Embedded Reflection application runs on an embedded real-time operating system. Because Windows™ is not deployed, you have the security of knowing that your staff is unable to open the Internet on your POS station, run other applications or inadvertently load viruses or spyware. Your NCC embedded application is installed on a flash drive, not a hard disk drive, providing additional speed and exceptional reliability. For unprecedented savings, security, reliability and redundancy, NCC Reflection POS Embedded is the preferred NCC platform.



## NCC Reflection POS for Windows

The same reliable Reflection application can be installed on a Windows™ operating system platform. Reflection for Windows allows the possibility of running applications other than NCC, performing remote file maintenance, or using Datacap Systems NETePay™ rather than a Datacap Tran™ device. The Reflection Windows™ version will also support an optional rear LCD customer display screen as well as other standard Windows peripherals. Consult with your NCC Reseller to determine which Reflection operating system platform is best suited to your needs.



The attractive, powerful SAM4s SPT-4845 NCC Reflection POS is ideal for installations including retail scanning and many more like these:

- Airport Kiosks / Mall Kiosks
- Amusement Parks
- Apparel & Accessory Shops
- Aquariums
- Arcades
- Auto Parts / Auto Tire Stores
- Bakeries
- Barber & Beauty Shops
- Bars, Taverns & Nightclubs
- Boat Supplies
- Book Stores
- Boutiques
- Bowling Alleys
- Bicycle Sales & Service
- Camera/Photo Supply
- Candy Nut & Confectionery
- Car Washes
- Carnivals / Festivals
- Children & Infant Ware
- Chinese Restaurant/ Carry-out
- Clothing Rental
- Coffee/Cappuccino Shops
- Concessions
- Convenience Stores
- Cosmetic Stores
- Craft Shops
- Delicatessens
- Dentists
- Drug Stores & Pharmacies
- Dry Cleaners
- Ethnic Markets
- Eyeglasses/Vision Centers
- Family Restaurants
- Flea Markets
- Flower Shops
- Gas Stations
- Gift, Card, & Novelty
- Glass, Paint & Wallpaper Stores
- Golf Courses
- Hardware Stores
- Health & Beauty Spas / Hair Care
- Hobby Toys and Game Shops
- Hot Dog Stands
- Ice Cream/Soft Serve/ Yogurt
- Landscaping Services
- Liquor/Beer/Wine Stores
- Lumber & Building Materials
- Marinas, Marine Service & Sales
- Medical Offices
- Men's/Boy's Clothing
- Movie Theatres
- Music & Instruments
- News Dealers & Newsstands
- Nursery, Lawn & Garden
- Orchards
- Pet Shops
- Photography Studios
- Plumbing & Heating Equipment
- Quick Service/Fast Food Rest.
- Record/Music Stores
- Resorts/Campgrounds
- Seasonal Merchandise
- Shoe Stores/Shoe Repair
- Smoothies/Custard
- Souvenir Stands
- Specialty Food Stores
- Sporting Goods/ Sports Apparel
- Stadiums/Ball Parks
- Stationary & Office Supplies
- Submarine Sandwiches
- Tailors, Mending & Alterations
- Tanning Salon
- Tattoo Parlors
- Theme Parks
- Ticket Offices
- Tobacco Shops
- Used/Second Hand Store
- Variety Stores
- Veterinary Services
- Video Rental
- Women's Apparel

# SPT-4845 NCC Reflection POS Touch Screen Terminal



Optional Integrated 15" Rear LCD Customer Display (NCC Reflection POS for Windows)



Optional Integrated 9.7" Rear LCD Customer Display (NCC Reflection POS for Windows)



Optional Integrated 7" Rear LCD Customer Display (NCC Reflection POS for Windows)



Optional Integrated Rear VFD Customer Display

## Options and Upgrades

Configure your system with these easy to add options:

- Integrated VFD Customer Display – 2 Lines x 20 Characters
- Integrated 7", 9.7" or 15" LCD Customer Displays (NCC Reflection POS for Windows Only)
- WiFi Module (NCC Reflection POS for Windows Only)
- Wall Mount Bracket with Standard VESA Configuration



Two USB Ports on the Left Side

## Connectivity

- A Drawer Voltage Selector Switch
- B Cash Drawer
- C Parallel
- D Line-Out
- E Mic-In
- F Line-In
- G USB (2)
- H LAN
- I COM1 (Powered)
- J COM2 (Powered)
- K USB (2)
- L COM3 (Powered)
- M VGA
- N COM4 (Powered)
- O DC Out (For Rear LCD)
- P DC In (Power)

## Specifications

<b>Processor:</b>	Intel Ivy Bridge Celeron 1037U 1.8GHz Fanless
<b>Cores / Threads:</b>	Dual Core / 2 Threads
<b>Cache Memory:</b>	2MB
<b>Bus Speed:</b>	5 GT/s (Giga Transfers per Second)
<b>Display LCD:</b>	True Flat 15" LCD with LED Backlighting
<b>Resolution:</b>	1024 x 768
<b>Brightness:</b>	Adjustable Up to 350 cd/m2
<b>Integrated Speakers:</b>	Integrated 2 Watt Speakers
<b>Chipset (PCH):</b>	NM70
<b>Touch Panel:</b>	5-Wire Resistive Touch
<b>MCR:</b>	Integrated USB Interface Triple Track MCR
<b>Hard Drive:</b>	Not Applicable 2.5" With SATA Interface
<b>Standard O/S:</b>	Not Applicable POSReady 2009 / POSReady 7
<b>RAM Memory – 2 Slots:</b>	2GB SODIMM DDR3 (1600MHz) Expandable To 4GB
<b>Video Memory:</b>	Shared System Memory Up To 512MB
<b>Compact Flash:</b>	Standard SATA Adaptor Optional
<b>Serial Ports – 4 External:</b>	<b>COM1, COM2, COM4</b> = DB9 With Pin 9 0V/+5V/+12V (User Selectable by BIOS) <b>COM3</b> = RJ45 Pin 1 0V/+5V/+12V (Selectable by Jumper)
<b>2 Internal:</b>	<b>COM5</b> = Primary Touchscreen <b>COM6</b> = RJ45 for Customer Display Port (VFD)
<b>Parallel Port:</b>	One DB-25F
<b>USB Ports:</b>	6 V2.0 (2 Left Side of screen / 4 Bottom)
<b>Cash Drawer Port:</b>	RJ11, 12V or 24V Selectable By Switch (Maximum 2 Drawers – Supports Drawer Compulsion)
<b>LAN Port:</b>	RJ45 10/100/1000 Base-T (Giga LAN) RealTek RTL8111DL
<b>VGA Port:</b>	One DB15F Display Port for Second LCD (Resolution 2048 x 1536)
<b>Audio Port:</b>	One Line-In / One Line-Out
<b>Mic Port:</b>	One Mic-In
<b>Power Supply:</b>	60W, 12V/5A 100-240V 50-60Hz External Power Adaptor
<b>Current / Power Usage:</b>	0.37A / 45W
<b>Operating Temperature:</b>	32° F to 95° F (0° C to 35° C)
<b>Dimensions – Base:</b>	11"W x 7-3/8"H x 8-5/8"D
<b>Overall:</b>	14-1/8"W x 12-1/8"H x 8-5/8"D
<b>Shipping Carton:</b>	20-1/4"W x 13"H x 16"D
<b>Shipping Weight:</b>	17.5 lbs.
<b>Safety and EMI:</b>	FCC / RoHS

